



Temple Beth El

Bradenton • Lakewood Ranch

Your Reform Jewish Temple in Manatee County

Discover Your Jewish Path

October 2023 - Tishrei / Cheshvan 5784



Sukkot

the time of our rejoicing

חג הסוכות



Shemini Atzeret

and

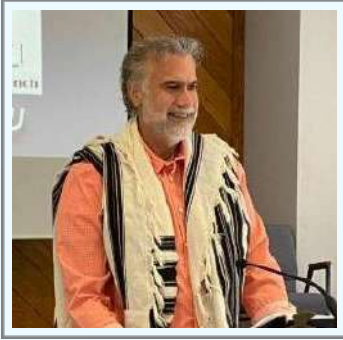
Simchat Torah



5150 Peridia Blvd. E. • Bradenton, FL 34203

941-755-4900 • bethel-fl.org

My Message - By Reb Tuviah



Sometimes, after the High Holidays, there may be the tendency to feel a slight sense of let-down. The anticipation and working toward the “Big Days,” including the nervousness: Will I deliver the right message? Will my words hit home? Will people be inspired by the prayers, the music and the camaraderie? The sanctuary is full for a few days as I get to see familiar faces as well as new faces. There is excitement in the air and it is palpable. And then, we are back to normal. The beautiful pure-white Torah covers are put away and the Torah scrolls are re-dressed in their familiar covers. There is the

possibility of the sense of let-down creeping in.

In reality however, there is so much happening at Temple Beth El that there is no time to look back...only ahead. Our Religious School is up and running with enthusiastic, eager children. Our sanctuary is filled with smiling, happy people who are truly excited about celebrating Shabbat each and every week in community. Music is filling the air and it's just not from my guitar. Sounds of tambourines, Albert's bass guitar and Maxx's flute are accompanying the multitude of voices all joining together as one harmonious voice of praise! Deep learning is taking place as we are challenging ourselves to dig deep into the words of Torah. We have a brand new website, new temple brochures, and truly meaningful Oneg and Kiddush sponsorships for celebrations and for honoring those we have loved and lost. More adult education classes will be starting soon and our Mitzvah Bag Project is a huge success as we continue to meet the needs of those less fortunate. There is even more in the works but I don't want to spoil any surprises!

Although there is so much to be excited about and grateful for, we must also acknowledge that for some, this past month or two has been difficult. Hardships, challenges, tragedies, ailments. Life lived with both joy and challenge. At the end of Yom Kippur, those who were still at our services stood together in candlelight, singing the Havdalah service that “separates the holy from the ordinary.” I'd like to suggest that the holiness doesn't end when the candle is extinguished, but lingers on into the rest of the year. What we may think of as “ordinary” can become extra-ordinary...when we notice.

This new year of 5784, let us be sure to notice and to pray for the strength to embrace the joys and the challenges with equal enthusiasm and gratitude, knowing that all these experience, all these blessings, help us grow into the people we are meant to be.

L'Shalom,
Reb Tuviah

A Message From Our Temple President



Shalom Temple family and friends,

September was certainly a busy month for Temple Beth El. We welcomed in the Jewish New Year 5784 and celebrated Rosh Hashanah and Yom Kippur along with our Sukkot/BBQ/Open House. We are so excited that we filled our sanctuary for our High Holy Days services. To all who participated in helping to bring these events to life, my sincerest thank you.

If you joined us at our annual Tashlich 5784 celebration, you witnessed a marvelous celebration as we symbolically cast our sins into the water. The service was musical and spiritual as we stood on the banks of Jiggs Landing with the beautiful feelings of a new beginning. As Jews, we know the importance of helping others and strive to find new ways to do mitzvahs. It is who we are. In addition to mitzvahs, tradition also plays an essential role in our heritage, and one tradition Temple Beth El is proud to continue is filling a Publix Grocery Store paper bag with non-perishable food to donate to Meals on Wheels. We contributed over a thousand pounds of food in the past years, and we hope to surpass that number this year! There are grocery bags in the lobby of our Temple for you to take home and fill. Please return the bags to the Temple before Oct. 7th when we have Simchat Torah.

In my speech on Yom Kippur, I spoke about how vital collaborations are, and one of our most important collaborations is with the Jewish Federation of Sarasota/Manatee. They support us in numerous ways, and I am happy to report that they recently provided us with two generous grants: one for High Holy Days security and one for Shabbat School tuition assistance. We thank them for all their help and support throughout the year.

Don't forget to mark your calendar for **Simchat Torah** on Saturday, October 7 at 10:00 am. Join us as we embark on a new year of Torah reading as we roll the Torahs from the end, back to the beginning. It is going to be a great Shabbat celebration.

On behalf of Temple Beth El's Board of Directors, my family, and myself, I would like to wish everyone a year of health, happiness, and prosperity, and may we have a year of peace and security in Israel, the United States, and all around the world.

Warm Regards,

Joel Auerbach

News from our Sisterhood & Men's Club



Greetings from the TBE Sisterhood. On October 5, from 3:30pm-5:30pm, Sisterhood is sponsoring a “get-acquainted” tea for all TBE ladies. We hope you can join us! In December 2023, we will be having our annual Chanukah potluck and gift exchange dinner. In 2024, we are planning an evening at the Piano Bar in Bradenton to hear “dueling pianos”, which has received excellent reviews from Sisterhood members. This event will be co-sponsored by the TBE Brotherhood. Check the TBE website (www.bethel-fl.org) or the Temple Beth El weekly wrap for more details on these upcoming events as they become available. Sisterhood recently donated funds for TBE September Open House. We would love to hear your ideas and thoughts on fun events, fund raising events, and Mitzvah projects. Please share by email to meg.weinberg@verizon.net or by calling me at 401-707-2211. The next Sisterhood Board meeting will be Wednesday, October 13, at 4:00pm and is open to all Sisterhood members. If you are interested, please send me an email for the Zoom link. On behalf of the Sisterhood Board, we look forward to catching up at our upcoming Tea Party!

L'shalom,
--Meg Weinberg
Sisterhood President



At our August meeting a challenge was issued to all Brotherhood members to get at least one new advertiser for the newsletter by our next meeting on October 15th which will be at the IHOP SR 64 Bradenton at 9am. Members are asked to report on their new advertisers at the meeting. .

Regards,
Bob Johnson
Brotherhood President

Welcome New Members!

Joining our synagogue reminds us that we're part of a wider community and gives us a chance to reach out and unite with others. We are a warm and inviting community. Our Shabbat services are open to everyone.

Let's all welcome our newest members

Diana and Joe Tully

Jeff Schneiderman

Randi Sofman

Welcome to our shul!



Join today and get your new member gift and engraved name badge!

Want More Information?

Click Here

Remember to Mark Your Calendar!

October 2023

Thurs. Oct. 5	Mah Jongg - 1:00-3:00pm
Thurs. Oct. 5	Sisterhood Meet and Greet Tea Party 3;30pm
Sat. Oct. 7	Shabbat / Shemini Atzeret / Simchat Torah - 10:00am
Sun. Oct 8	TBE at the LWR Farmer's Market 10:00am-2:00pm
Mon. Oct. 9	Mitzvah Day at Meals on Wheels 8:30am
Thurs. Oct. 12	Rosh Chodesh Circle; Cheshvan - 7:00pm
Thurs. Oct. 12	Mah Jongg - 1:00-3:00pm
Sun. Oct. 15	Brotherhood/Men's Club Breakfast - IHOP 9:00am
Tues. Oct. 17	Situational Awareness Class 1:30 pm
Thurs. Oct. 19	Mah Jongg - 1:00-3:00pm
Sat. Oct. 21	Havdalah & Shabbark (Parsha Noach) - 6:30pm
Tues. Oct. 24	TBE Board meeting on Zoom - 7:00pm
Thurs. Oct. 26	Mah Jongg - 1:00-3:00pm
Sat. Oct. 28	Havdalah, Dinner and a Movie "Abraham" 5:30pm

[Click Here](#) to see *all of our calendar events*



COME CELEBRATE SHABBAT!

Kabbalat Musical Shabbat Service
Friday evenings at 7:00pm

Shabbat Morning Service
Saturday mornings at 10:00am



Come Play Mah Jongg!



Every Thursday from 1-3 pm at TBE

Men and Women welcome

No RSVP necessary

Contact Robin Block with questions

robinlblock@gmail.com

Snacks provided!

October 2023
Tishrei/Cheshvan 5784



Temple Beth El
 Bradenton/Lakewood Ranch
Discover your Jewish Path

Sunday	Monday	Tuesday	Wednesday	Thursday	Friday	Saturday
1	2	3	4	5	6	7
				Mah Jongg at TBE 1:00pm Sisterhood Meet and Greet at TBE 3:30pm	Kabbalat Shabbat Service 7:00pm	Shabbat School 9:30am Shabbat Shemini Atzeret/Simchat Torah Service 10:00am
8	9	10	11	12	13	14
	Mitzvah Day at Meals on Wheels 8:30am			Mah Jongg at TBE 1:00pm Rosh Chodesh Circle; Cheshvan 7:00pm	Kabbalat Shabbat Service 7:00pm	Shabbat School 9:30am Shabbat Service 10:00am
15	16	17	18	19	20	21
Brotherhood Breakfast at IHOP 9:00am		Situational Awareness Class at TBE 1:30pm		Mah Jongg at TBE 1:00pm	Kabbalat Shabbat Service 7:00pm	Shabbat School 9:30am Shabbat Service 10:00am Havdalah & Shabbark 6:30pm
22	23	24	25	26	27	28
		TBE Board Meeting on Zoom 7:00pm		Mah Jongg at TBE 1:00pm	Kabbalat Shabbat Service 7:00pm	Shabbat School 9:30am Shabbat Service 10:00am Havdalah/Dinner & Movie 5:30pm
29	30	31	1	2	3	4
				Mah Jongg at TBE at 1:00pm	Kabbalat Shabbat Service 7:00pm	Shabbat School 9:30am Shabbat Service 10:00am



**Join the women
of TBE for a
*Sisterhood Meet &
Greet Tea Party***

directly after Mah Jongg at the temple

THURSDAY, OCT. 5th

3:30pm- 5:30pm

**Mingle, Meet, Schmooze and Snack.
Open to all women**

**Don't like tea? Not to worry—we'll also
have wine plus hot appetizers and tea
party food.**

**RSVP to Cheryl Kramer
cbkramer59@gmail.com
No later than Sept. 29**

(consider joining the sisterhood for just \$25)

[RSVP Here](#)

Temple Beth El invites you to celebrate...

SIMCHAT TORAH



We complete our reading of the Torah with the Book of Deuteronomy and then roll the scroll back to start again with the Book of Genesis, Chapter 1, "In the beginning..."

There will be teaching, discussion, music and dancing around the sanctuary with all the Torah scrolls!

SATURDAY, OCT. 7 AT 10:00 AM

5150 PERIHA BLVD. E. • BRADENTON, FL 34205 • 941-755-4900 • BETHEL-FL.ORG

Come see your temple friends at the LWR Farmer's Market at "Waterside"

Sunday, October 8th • 10am - 2pm



**Over 100 vendors! Grab a knish or a
bagel, shop, eat, visit.
Bring the dog! Stop by the TBE table!**





Produce Packing

Come join us, and together we can change someone's life

Meals-on-Wheels

812 23rd Ave E, Bradenton

For future dates or more information, contact ChrisAnn Allen, Mitzvah Chair
at ChrisAnnTBE@gmail.com

*TBE Women's
Rosh Chodesh Circle*

**Thursday, October 12th
7:00 pm
at Temple Beth El**

Inviting all women to celebrate the new moon,
make new friends & new spiritual connections...



*...anyone who blesses the new month in its proper time,
it is as if she greets the Face of the Divine Presence.
~Sanhedrin 42a*

Contact the temple office for more information
info@bethel-fl.org 941-755-4900

Join us for the next
BROTHERHOOD
Breakfast



SUNDAY, October 15
9:00am
AT IHOP on 64

NO RSVP Necessary

Contact Bob Johnson
for questions
tbeflmensclub@gmail.com
202-368-3732



Don't Miss the Fun!



GET INVOLVED. GET EMPOWERED.
GET TRAINED.

JOIN US FOR BEAWARE: INTRODUCTION TO SITUATIONAL AWARENESS TRAINING



BeAware, SCN's Introduction to Situational Awareness Course, will teach you how to recognize suspicious or potentially dangerous behavior and threats, and what to do – whether you are in synagogue, at school, or going about your day.

Designed for every member of the community, no background in security is required. The course will cover the basics of situational awareness and how to help protect yourself, your family, and your community.

TOPICS COVERED:

- ✓ Enhancing situational awareness
- ✓ Identifying safety and security threats
- ✓ Recognizing and reporting suspicious activity
- ✓ Learning how to be an active participant in the safety of your community



DATE & TIME: Tues. Oct. 17 - 1:30pm

LOCATION: 5150 Peridia Blvd. E.

TO REQUEST TRAINING, CONTACT
training@securecommunitynetwork.org



Shabbark Shalom!



In honor of Parsha Noach, we are very excited to announce the 2nd Annual "Shabbark Shalom" service outside on the TBE Green. All are invited, with or without a furry friend.

(Your favorite stuffed animals are welcome as well!)



Saturday, Oct. 21st 6:30pm

Followed by a Shabbark Oneg with animal treats supplied by TBE



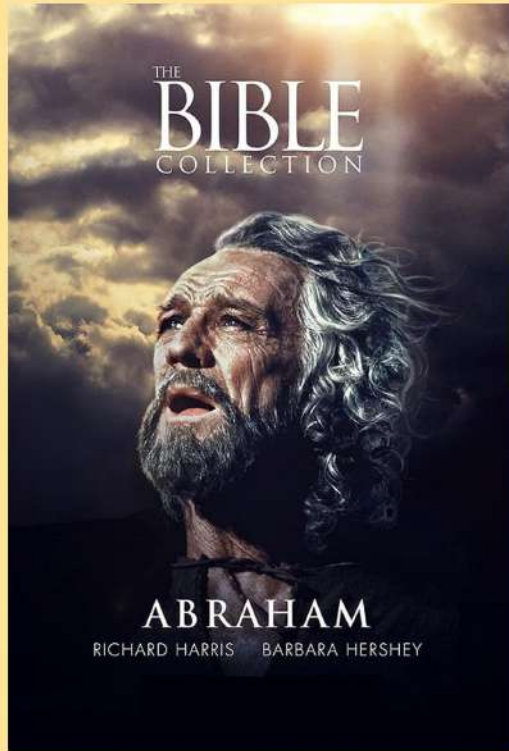
We will share stories about how our four-legged friends are not just "pets" - they are lifesavers, best friends, security guards and heroes.

A Shabbark Shalom service under the stars with our "furry friends" will be a memorable event you won't want to miss!

All dogs must be on leashes and elimination bags will be available

5150 Peridia Blvd. E • Bradenton, FL 34203 • 941-755-4900 • bethel-fl.org

**Temple Beth El presents...
Havdalah, Pizza and a Movie**



The story of Abraham and Sarah and the trials they endure. Commanded by God, Abraham lead his family to the promised land of Canaan with the promise that if he does so, his descendants will become a great and numerous tribe. His obedience, as well as that of his children and grandchildren, is severely tested as they prove their faith to God.

Join us for a Pizza dinner and a special screening of a beautiful movie!

October 28 5:30 PM

**BUY TICKETS ONLINE
\$15 members \$20 non-members
RSVP In advance requested:**

www.bethel-fl.org

5150 Peridia Blvd. E. Bradenton

Looking *ahead*



Mark Your Calendar!

Mon. Oct. 9 Mitzvah Day at Meals on Wheels 8:30am

Thurs. Oct. 12 Rosh Chodesh Circle; Cheshvan - 7:00pm (10/14)

Sun. Oct. 15 Brotherhood Breakfast - IHOP 9:00am

Tues. Oct. 17 Situational Awareness Class 1:30 pm

Sat. Oct. 21 Havdalah & Shabbark (Parsha Noach) - 6:30pm

Sat. Oct. 28 Havdalah, Dinner and a Movie "Abraham" 5:30pm

Fri. Nov. 3/Sat Nov 4 Special Kristallnacht Shabbat 7:00pm /10:00am

Mon. Nov. 6 Mitzvah Day at Meals on Wheels 8:30am

Thurs. Nov. 9 Rosh Chodesh Circle; Kislev - 7:00pm

Fri. Nov. 10/Sat. Nov. 11 Veterans Day Shabbat - 7:00pm/10:00am

Sun. Nov. 12 Brotherhood Breakfast - IHOP 9:00am

Mon. Dec. 4 Mitzvah Day at Meals on Wheels 8:30am

Thurs. Dec.7 Downtown Chanukah with Menorah Lighting 5:30pm

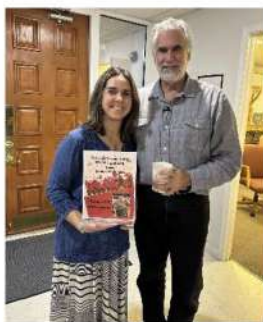
Fri. Dec. 8 Shabbat /Chanukah, Bring your Menorah! - 7:00 pm

Sun. Dec. 10 Chanukah Fest! Craft Fair, Food Trucks, program 4:00 -7:30pm

Wed, Dec. 13 Susterhood Chanukah Pot Luck - 5:30 pm

FOR MORE INFO VISIT US AT www.bethel-fl.org

Reb Tuviah and Nancy's 20th wedding Anniversary, Silichot and Tashlich!



Our October Simchas

October Birthdays

Barbara Cole	10/07
Ira Kramer	10/16
Micah Metcalf-Clark	10/19
Helene Johnson	10/20
Gerald Sokol	10/21
Joel Auerbach	10/22
Erwin Segal	10/26



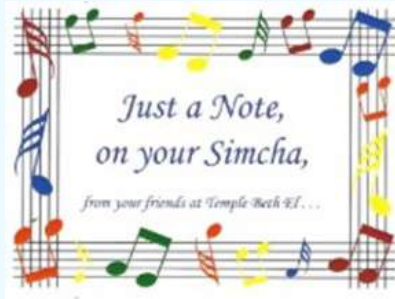
October Anniversaries



Amy & Quinn Moriarty	10/12
Barry & Patty Schneider	10/19
Lisa & Joshua Leuchter	10/30

If you are a member of TBE and don't see your birthday or anniversary listed, please email [the office](#) so that you can be listed here.

Simcha Grams



TBE sends Birthday and Anniversary, "Simcha Grams" to members in honor of their special day. This is a great way to contribute to your Synagogue and to send your TBE family good wishes.

Names must be received at least two weeks prior to the date. The donation is \$3.00 per name. The card will be mailed to those individuals prior to their special day. Thank you for your support!



Send November Birthday

Stephen Feldman	11/01
Ginger Manas	11/03
Marion Howard	11/07
Lindsay Auerbach	11/11
Regina Fluellen-Reitwiesner	11/15
Robert Kupferman	11/20
Beverly Jacobs	11/21

Send November Anniversary

Brian and Ruthie Weiss	11/13
Billy and Christen Allen	11/16
Bob and Helene Johnson	11/23
Harvey and Denise Schonwald	11/25
Neil and Sandy Clark	11/28

If we have somehow overlooked your Simcha or made an error in printing the date, please accept our apologies and call the temple office at 941-755-4900 or [send an email](#) so that we may update our records.

[Click here to request that your name be placed on a Simcha Gram](#)

Yahrzeits

It is traditional to light a Yahrzeit candle on the evening of observance. In addition, we urge you to attend Shabbat services to honor the memory of your beloved and to recite Mourner's Kaddish on the Yahrzeit. May your memories of the departed always be a blessing.



SERVICES October 6th & 7th

Cheryl Kramer IMO Louis Adler

Susie Konicov IMO Rosa Halberstadt

Marlena Johnsky IMO Florence Harris

SERVICES October 13th & 14th

Jerilyn Dimant IMO John Cassidy

Ron Eiseman IMO Mary Eiseman

SERVICES October 20th & 21st

David Meier IMO Karl Heinz Mai

Celia Strickler IMO Nathaniel Strickler

Paul Stahl IMO Helen Slater

SERVICES October 27th & 28th

Sharon Carlson IMO Edward Ger

Judith Lowe IMO Gladys Forman

SERVICES November 3rd & 4th

Carol Dworkin IMO Benjamin Dworkin

Rise Bausch IMO Anton Baumgarten

Sylvia Kupferman IMO Manuel Epstein

Phyllis Hemler IMO Ida Cohen

To commemorate your beloved, it is also customary to memorialize the departed by making a donation to the synagogue. You can donate here or mail your check to the Temple at 5150 Peridia Blvd East, Bradenton 34203.

[**DONATE**](#)

Donations *Thank you for your donation!*



We thank all the people who made HHD/Kol Nidre Donations. We are very blessed to have you in our lives!

We also want to thank the following people for their donations this month:

General Donations:

Bob and Charlene Eredics
Howard Hammerman
Robin Block and Jeffrey Corey

Security Fund

Jewish Federation of Sarasota-Manatee

Future Expansion Fund

Dr. Gary and Meg Weinberg

Yahrzeit:

Beverly Safron remembers her grandfather, Hugo Sohn
Dotti Mizzi remembers her father, Issac Abo
Neil and Robyn Spirtas IMO Carol Toppel
Marlena Johnsky remembers her father, Norman Harris
Phyllis Hemler remembers her grandparents, Fannie and Phillip Kreutzer
Marvin and Marion Howard IMO Lionel Friedman
Robin and Ron Eiseman IMO Sibyl Padelford
Neil and Robyn Spirtas IMO Lionel Friedman
Bill Gregory IMO Norma Jayson
The Ellis Family IMO Jonas Ellis

September Oneg Sponsors:

Ginger Manas - Happy 90th Birthday Roy!
TBE Family- Happy 20th wedding Anniversary Reb Tuviah and Nancy
Linda and Craig Hoffman - IMO Lillian Hoffman, founding member and donor of our first torah!

Honor or Remember a Friend or Loved One: At Temple Beth El, there are many ways in which you can honor or remember a loved one or a friend. With each donation an acknowledgement will be sent to the honoree or the family.

Or make a donation for the:

- Future Expansion Fund: For the growth of TBE and our own building.
- Cantorial Fund: To fund cantorial guest soloists at temple services.
- General Fund: For the operation of the Temple.
- Rabbi's Discretionary Fund: may be used for any purpose that the rabbi feels appropriate; often for charitable reasons.
- Security Fund: To increase security at TBE.
- Tova Risha Fund: Scholarship for Temple's Religious School.

Thank you to all of our generous donors. Your gift helps keep Reform Judaism alive in Manatee County. There are many ways and reasons to make a donation to TBE

Kibbitz Korner

Announce your milestones, simchas, news and nachas. Share your joys, thank congregants, members and friends, announce anniversaries, Bar/Bat Mitzvahs, weddings, engagements, graduations, introduce babies and grandbabies. You can even ask for help or ideas.



TBE Mah Jongg Group wishes everyone a Happy New Year and a successful Open House!



Mazel Tov to Neil and Robyn Spirtas on their wedding anniversary



Thank You Albert, Maxx, Reb Tuviah and Miriam for their beautiful music during the High Holy Day Services



Yasher Koach to Micah, Amelia and Aiden for the great job they did with their presentation on Rosh Hashanah



[Click Here to add your milestone, simcha or news to next month's newsletter!](#)

Check Out our Wonderful Advertisers

We're close by to serve you better.



Our area has grown, and so have the services we offer. No matter what your idea of a perfect memorial is, it's likely we already have the experience comfortably providing the best service and accommodations for it.

Jeff, Robert, and Jason Toale at their Celebration of Life Center at Lakewood Ranch

Robert Toale & Sons
SARASOTA • BRADENTON • LAKEWOOD RANCH • VENICE

 SARASOTA 170 Honore Avenue 941-371-4962	 SARASOTA 7454 S. Tamiami Trail 941-921-5755	 BRADENTON 1221 53rd Avenue E. 941-755-2688	 LAKEWOOD RANCH 4310 Solutions Lane 941-932-8100
------------------------------------------------------------------------------------------------------------------------------------	----------------------------------------------------------------------------------------------------------------------------------------	---------------------------------------------------------------------------------------------------------------------------------------	--------------------------------------------------------------------------------------------------------------------------------------------

RTSFUNERALS.COM



Gerry Ronkin
JEWISH LIAISON
941-809-5195

Not affiliated with Toale Brothers Funeral Home, or Toale Brothers, Inc.

HONORED  PROVIDER

[Learn More](#)

Authentic NY/NJ bagels made from scratch



The Market at UTC
5275 University Parkway
Unit 103 (near Kohl's)
(941) 388-8910



jerseygirlbagels.net

[Learn More](#)

COMPUTER SOLUTIONS

- Troubleshooting
- Virus Removal
- Tech Support
- Tutoring



Tel. 631.478.2070
roberta@computersolutionsfl.com

[Learn More](#)



The mission of the TBE Caring Circle is to identify and reach out to any member who may be in need of support.

The Caring Circle is dedicated to contacting anyone that may be struggling with physical, emotional or spiritual challenges and may need extra support or prayers.

Please notify the temple office, or the coordinator, Phyllis Hemler, with the name and contact info of any TBE member in need.

Phyllis Hemler:
609-203-0110
phyllishemler@gmail.com

[Click here to add a name to the Mi Sheibarch list](#)

PARTNER with TBE

Temple Beth El emails a monthly newsletter to over 575 people each month. This newsletter is also online for all to see. Consider placing an ad for your business in the newsletter! (consider asking your Doctor, CPA, Dentist, Salon, Handyman, etc. to place an Ad)

TBE advertising rates start at just \$30 per month. Contact Helene Johnson at publicity@bethel-fl.org for information.



Temple Beth El

Make an Oneg or Kiddush Announcement

- * Commemorate your special day
- * Honor or remember someone
- * Celebrate a special occasion
- * Recognize someone's hard work
or "Just because"

Friday Night Oneg \$50

Saturday Kiddish \$50

Both days \$100

(To celebrate, consider bringing a small bakery cake!)



Sign up online by going to

www.bethel-fl.org

(Payments & Donations)

or call: 941-755-4900

***please note- there may be more than
one announcement at any given Oneg**

BOOK NOW

Our Mitzvah Projects

Temple Beth El has been working with the Salvation Army since the spring of 2020. People staying at the shelter need health and beauty aids; everything from soap and shampoo to Vaseline and sunblock. These items are only available as they are donated. Please consider donating to this worthwhile project. Items can be brought to the Temple. Please drop your items in the blue bins under the bulletin board in the lobby.

TBE will once again have the opportunity to participate in "produce packing" at Meals on Wheels at 811 23rd Avenue East. The Food Bank purchases fresh produce for their meal delivery clients. The project involves sorting and bagging the produce. No lifting required. If you choose to sit, you can sit. For a lot of people, this is the only fresh food in their diet. They very much look forward to receiving it. The more people we have the faster it goes. Arrive 8:30 am. (Typically just 2 hours or less of your time).



VOLUNTEERS ARE NEEDED.

WE HOPE YOU WILL CONSIDER PARTICIPATING IN THIS WORTHWHILE MITZVAH PROJECT.

Next Date is Monday, October 9, at 8:30 am

Contact ChrisAnn Allen for more info- chrisanntbe@gmail.com



The synagogue can purchase burial plots in the "Gardens of Abraham" section of the Skyway cemetery and pass the savings on to our members. However, we need to purchase at least five at a time. Our Treasurer, Ira Kramer is taking names of those who might be interested.

*Contact him for more information
treasurer@bethel-fl.org or 908-723-4078*

Religious School - A New Way, An Exciting Way!



No longer on Sunday, now "Hebrew School" happens every Saturday starting at 9:30 am and is "Shabbat School!" It is a delight for all. Children are included in the true celebration of Judaism. They become a part of their religion in a meaningful, practicing way, participating alongside their parents or grandparents and the rest of the congregants. This is the way learning was meant to be.



If you know of anyone interested in "Shabbat School" for their children, please have them contact Rabbi Tuviah.

If you would like more information, including Bar/Bat Mitzvah preparations and how to enroll, contact, Rabbi Tuviah – rebtuviah@gmail.com

[Learn More](#)



From Our Temple Treasurer

Two Ways to Make a Tax-Free Contributions to Temple Beth El

Starting in 2019 the Tax Cuts and Jobs Act increased the standard Federal income tax deduction such that more than 90 percent of taxpayers now take the standard deduction. The 2022 standard deduction is \$13,850 for single filers and \$27,700 for those filing married filing jointly. Add \$1500 for singles and \$3000 for married filing jointly for those over sixty-five.

That means your contributions to the Temple along with major medical and other deductible expenses would have to exceed these amounts to have an impact on your tax bill.

However, there are at least two ways to make a significant contribution to the Temple and save money on your taxes:

1. Set up a Charitable Remainder Trust with the Temple as the charitable beneficiary.
2. For those over the age of seventy-two with a traditional IRA, pay the required minimum distribution (RMD) directly from the IRA to the Temple.

The Charitable Remainder Trust must be set up by an attorney. It is an irrevocable trust. The donor transfers cash or assets to the trust. In addition to a qualified charity (such as the Temple) there must be one or more living individuals who will receive income from the trust for a specific number of years or for life. At the end of the term the remainder of the trust passes to the charitable organization.

Making changes in your RMD distribution is much easier. Simply inform the bank or broker that you want either a fixed amount or a percentage to go to the synagogue. The end of year statement (1099-R) will never show that amount and you can still take the standard deduction.

These paragraphs are for your general information only. It is not tax advice. I urge you to consult with a qualified income tax professional before making any changes.

Tax Planning and High Holiday Giving

If you have appreciated stock in any publicly traded company, you can donate the stock to Temple Beth El. You may be able to deduct the current market value from your 2021 taxable income as a Schedule A deduction without paying capital gains tax. The Temple can then sell the stock and use the funds to continue our good work.

Tax year 2021 appears to be the last year that most taxpayers can take up to a charitable cash contribution to a non-profit organization (such as Temple Beth El) directly from adjusted gross income. This "above the line" deduction is limited to \$300 for taxpayers filing as single, head of household, qualified widow(er)s, and married filing separately. Taxpayers filing joint returns are limited to \$600.

As in all things tax-related, there are exceptions and additional rules. Each person's situation is unique. Please check with your tax preparer to be sure. These are general suggestions only based on publicly available information.

An Easy Way to Donate to TBE

Most of use have a dish where we collect coins that fell into our pockets or purses. Please consider donating them to the Temple's "Pushki Fund." One hundred percent of the coins donated will go to the Temple's general fund and help us fund on-going operations. We will acknowledge your donation by letter and, if you itemize deductions, you can use the amount to lower your tax bill. Just put the coins into a sturdy plastic bag along with a note with your name and address. Leave the bag on the Temple's desk in the office the next time you come to services. We'll take it from there.

Ira Kramer, Treasurer
908-723-4078
treasurer@bethel-fl.org



Please remember to add your temple family to your will. There is no greater gift than leaving a lasting memory.

Respecting Holiness in Our Gathering Place

The TBE Sanctuary is a special place where we go for spiritual connection, reflection, and prayer. We ask that during services, congregants refrain from wearing tank tops, spaghetti straps, mini-skirts, shorts, or t-shirts. Please turn your cell phone off or place it on vibrate and refrain from social conversations once the service has begun.



TREE OF LIFE!

Leaves are available on the Tree of Life in the temple lobby. Have your leaf custom engraved to honor a loved one for \$100. Call the temple office for details.
941-755-4900



Do you have a facebook page? Have you “liked” TBE’s page? Go to our [FaceBook page](#) and hit “like”. Keep up with everything going on at the Shul. Also, consider joining the “Jewish Community of Manatee” on facebook too. We can comment and support each other there.

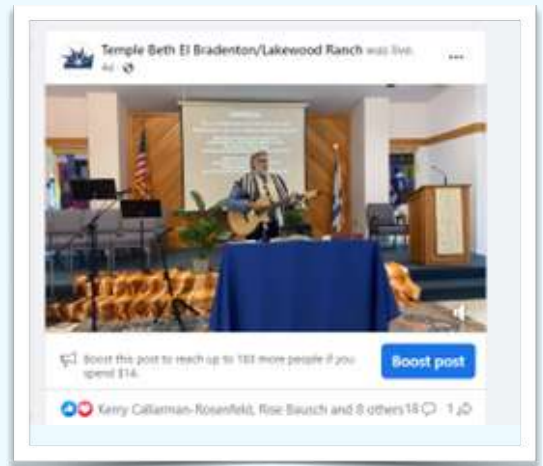


For questions about using Facebook, contact Robyn Spirtas
941-962-0884 or publicity@bethel-fl.org



And follow us on Instagram:
@tbemanatee

Watch live services or see a past service.... Go to www.facebook.com/tbebradenton



Temple Beth El Bradenton/Lakewood Ranch
5150 Peridia Blvd. E. Bradenton, Fl. 34203
941-755-4900 * bethel-fl.org